



UNILINE BEL-R

Lean and screwless IP65 safety luminaire with optics for escape route illumination. The luminaire is made of sturdy polycarbonate and is equipped with an IP65 membrane pressure compensation valve.

Luminaire for ceiling mounting with cable entry from behind. Also possible is recessed ceiling mounting with the optional recessed ceiling frame.

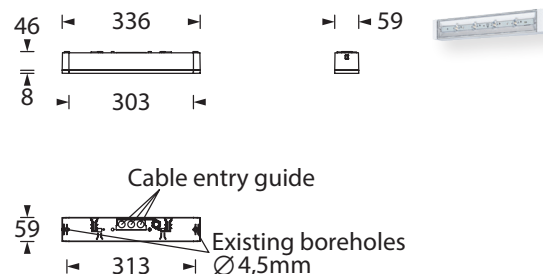
The luminaire is available with 3 watt, 6 watt or 10 watt LED-bar.



Technical specifications

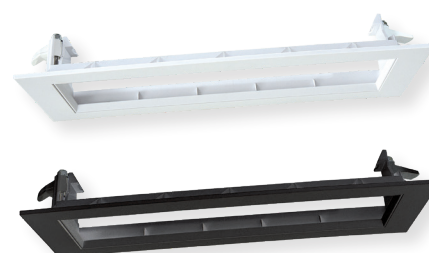
Connecting terminals	2 x 2,5 mm ² for double assignment
Casing/colour	Polycarbonate / white or black (light cover clear)
Type of assembly	Ceiling mounting
Dimensions (W x H x D)	336 x 54 x 59 mm
Protection class	IP65
Safety class	II

Illuminant	■ Luminaires for central battery systems			■ Self contained luminaires
	3W LED-bar	6W LED-bar	10W LED-bar	3W LED-bar
Light current	350lm	600lm	1.050lm	350lm (net) 350lm (emergency)
Rated operating time 1h	-	-	-	280lm (emergency)
Rated operating time 3h	-	-	-	120lm (emergency)
Rated operating time 8h	-	-	-	-
Luminous flux				100% / 100%
Emergency (DC)/mains 1h	-	-	-	80% / 100%
Emergency (DC)/mains 3h	-	-	-	35% / 100%
Emergency (DC)/mains 8h	-	-	-	-
Power consumption	6VA	10,3VA	15VA	6VA
Battery current input	19mA	27mA	41mA	-
Voltage supply	230V 50/60Hz / 220V DC +25/-20%			230V 50/60Hz
NiMh-Akku 1h/3h/8h	-	-	-	4,8V 2,0Ah
Temperature range	-10°C to +40°C			-
non-maintained mode	-	-	-	0°C to +35°C
maintained mode	-	-	-	-5°C to +30°C
optional:				-
Multi-switch and monitoring module	ELC MSÜ3 SET009 SET010 DALI	ELC MSÜ3 SET009 SET010	ELC MSÜ3 SET009 SET010	-
Self monitoring	-	-	-	SELF CHECK
Central monitoring	-	-	-	SAFELOG Line SAFELOG Wireless



Accessories

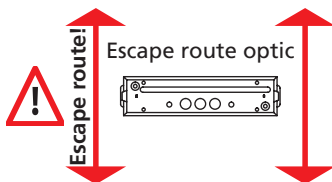
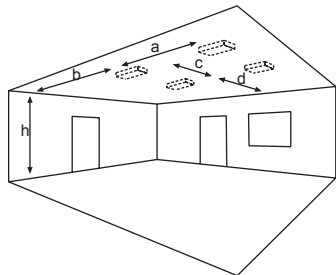
- Wire guard
- Cable assembly set
- Recessed ceiling frame



optional: Recessed ceiling frame

Technische Änderungen vorbehalten/Technical changes reserved

Lighting datas and tables of luminaire distances (E = 1,25 lx)



Ceiling mounting

■ Luminaires for central battery systems

Distance table for plane emergency routes / distance data in meters

Illuminant: 3W LED-bar

Luminous flux emergency (DC)/mains: 350lm / 350lm

h	2,50	3,00	3,50	4,00	4,50	5,00	5,50	6,00	6,50	7,00
a	-	-	-	-	-	-	-	-	-	-
b	-	-	-	-	-	-	-	-	-	-
c	17,90	20,20	22,10	23,40	23,80	23,30	22,50	21,90	21,50	21,10
d	7,80	8,40	8,20	7,80	7,60	7,40	7,00	6,30	5,50	4,40

Illuminant: 6W LED-bar

Luminous flux emergency (DC)/mains: 600lm / 600lm

h	2,00	3,00	4,00	5,00	6,00	7,00	8,00	9,00		
a	-	-	-	-	-	-	-	-		
b	-	-	-	-	-	-	-	-		
c	18,10	22,00	26,00	28,30	28,10	27,50	27,00	25,70		
d	7,50	9,40	10,00	9,70	9,30	8,60	8,00	6,80		

Illuminant: 10W LED-bar

Luminous flux emergency (DC)/mains: 1.050lm / 1.050lm

h	2,00	3,00	4,00	5,00	6,00	7,00	8,00	9,00	10,00	11,00	12,00
a	-	-	-	-	-	-	-	-	-	-	-
b	-	-	-	-	-	-	-	-	-	-	-
c	21,10	25,10	29,30	33,40	36,40	37,80	37,20	36,60	36,00	35,40	33,90
d	8,60	10,70	12,50	13,40	13,00	12,70	12,30	11,60	11,00	10,20	8,90

■ Self contained luminaires

Distance table for plane emergency routes / distance data in meters

Illuminant: 3W LED-bar

Luminous flux emergency/mains: 350lm/350lm – Rated operating time: 1h

h	2,50	3,00	3,50	4,00	4,50	5,00	5,50	6,00	6,50	7,00
a	-	-	-	-	-	-	-	-	-	-
b	-	-	-	-	-	-	-	-	-	-
c	17,90	20,20	22,10	23,40	23,80	23,30	22,50	21,90	21,50	21,10
d	7,80	8,40	8,20	7,80	7,60	7,40	7,00	6,30	5,50	4,40

Illuminant: 3W LED-bar

Luminous flux emergency/mains: 280lm/350lm – Rated operating time: 3h

h	2,50	3,00	3,50	4,00	4,50	5,00	5,50	6,00	6,50	7,00
a	-	-	-	-	-	-	-	-	-	-
b	-	-	-	-	-	-	-	-	-	-
c	17,20	19,30	20,80	21,30	20,80	20,00	19,50	19,10	-	-
d	7,40	7,50	7,10	6,80	6,60	6,20	5,50	4,50	-	-

Illuminant: 3W LED-bar

Luminous flux emergency/mains: 120lm/350lm – Rated operating time: 8h

h	2,50	3,00	3,50	4,00	4,50	5,00	5,50	6,00	6,50	7,00
a	-	-	-	-	-	-	-	-	-	-
b	-	-	-	-	-	-	-	-	-	-
c	13,80	13,50	12,80	12,40	-	-	-	-	-	-
d	4,50	4,30	3,70	2,80	-	-	-	-	-	-