

3W
LED

IP54

IP40

Farbe / Colour




STEP-LIGHT

Almost wall flush-mounted luminaire made of aluminum die-cast, powder coated in black, rectangular and slightly curved cover for recessed wall and stair mounting.

The luminaire is equipped with a Power-LED for area illumination. The luminaire has to be mounted in a one-gang/two-gang box.



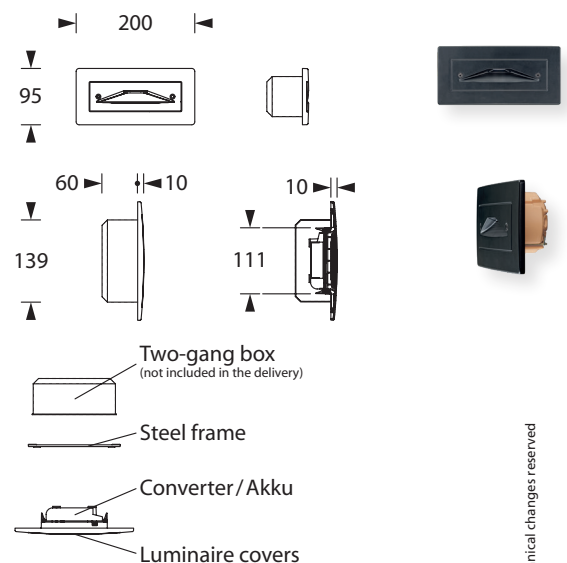
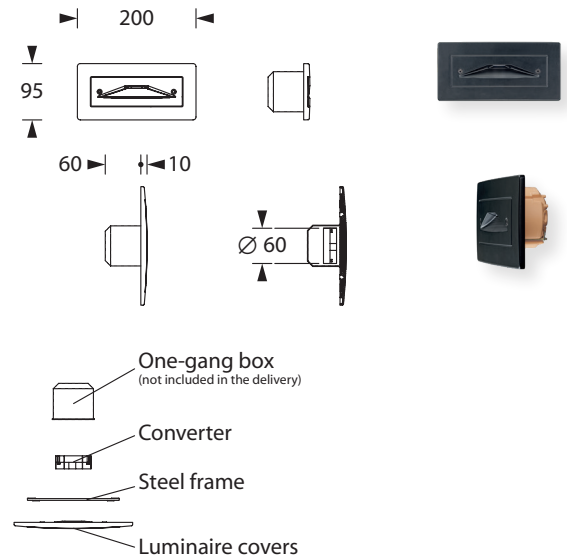
Technical specifications

Connecting terminals	3 x 2,5 mm ² for double assignment
Casing/colour	Lighting body: Aluminum die-cast / black
Type of assembly	Recessed wall mounting / stair mounting in a one-gang / two-gang box ¹⁾

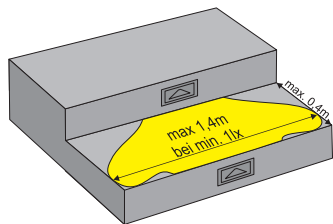
Dimensions
W x H x D 200 x 95 x 10 mm

Protection class	
Luminaire front	IP54
Luminaire rear	IP40
Safety class	I

	■ Luminaires for central battery systems	■ Self contained luminaires
Illuminant	3W LED	3W LED
Light current	120lm	120lm (net)
Rated operating time 1h/3h/8h	-	120lm (emergency)
Luminous flux		
Emergency (DC) mains 1h/3h/8h	-	100% / 100%
Power consumption	6VA	5VA
Battery current input	15mA	-
Voltage supply	230V 50/60Hz / 220V DC +25/-20%	230V 50/60Hz
NiMh-Akku 1h/3h/8h	-	4,8V 2,0Ah
Temperature range	-10°C to +40°C	-
non-maintained mode	-	-0°C to +35°C
maintained mode	-	-5°C to +30°C
optional:		
Multi-switch and monitoring module	ELC, MSÜ3, SET010	-
Self monitoring	-	SELF CHECK
Central monitoring	-	SAFELOG Line SAFELOG Wireless



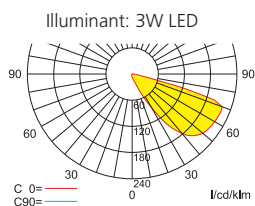
Technical changes reserved



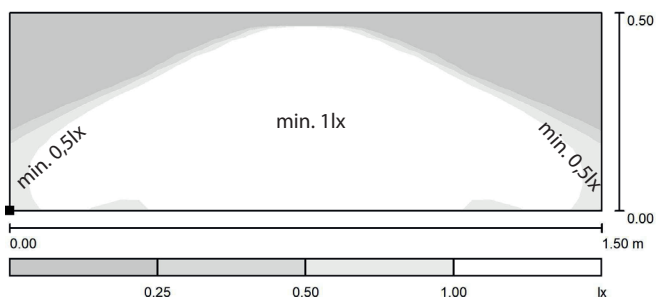
Lighting data

Luminaires for central battery systems

Distance table for plane emergency routes / distance data in meters

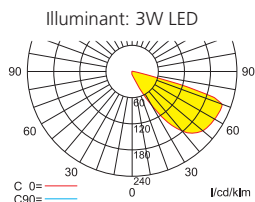


Luminous flux emergency (DC)/mains: 120lm / 120lm

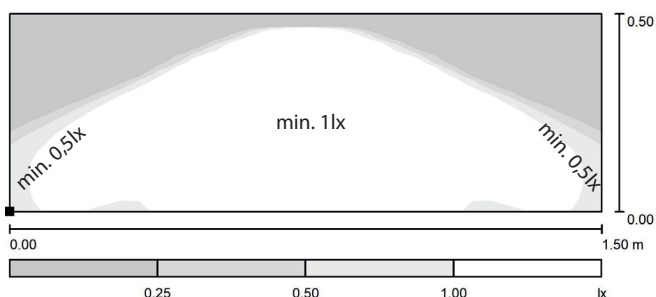


Self contained luminaires

Distance table for plane emergency routes / distance data in meters



Luminous flux emergency/mains: 120lm/120lm - **Rated operating time: 1h/3h/8h**



1) Approved boxes from Comp. Kaiser (not included in the delivery)

One-gang boxes for cavity wall installation	Kaiser Art. No.: 9264-22 or another make with min. 61 mm depth and the same clear inside diameter. Wall cutout: Ø 68mm
One-gang boxes for flush-mounting installation	Kaiser Art. No.: 1555-04 or another make with min. 66 mm depth and the same clear inside diameter. Wall cutout: Ø 60mm
One-gang boxes for on-side mixed concrete	Kaiser Art. No.: 1260-01 or another make with min. 82 mm depth and the same clear inside diameter. Wall cutout: Ø 60mm
Fire-protection boxes	Kaiser Art. No.: 9464-02 or another make with min. 62 mm depth and the same clear inside diameter. Wall cutout: Ø 68mm

Approved two-gang boxes from Comp. Kaiser (not included in the delivery)

Two-gang boxes for cavity wall installation	Kaiser Art. No.: 9062-02 Wall cutout: 2x Ø 68mm
Two-gang boxes for flush-mounting installation	Kaiser Art. No.: 1656-21 Wall cutout: 2x Ø 60mm
Two-gang boxes for on-side mixed concrete	Kaiser Art. No.: 1269-01 Wall cutout: 60 x 131mm
Fire-protection boxes	no boxes allowed