

BEAM 125-PC A-5LX

Safety luminaire for special demands according to EN 1838 in regards to illumination of firefighting equipment and safety devices like fire extinguishers, fire alarm and first aid devices with 5lx.

The luminaire is made of polycarbonate and is screwless for quick and easy ceiling mounting. It is equipped with a 1 x 3W Power LED (switching type: non-maintained mode)

Due to its slanted optic, the luminaire can be mounted in a distance up to 1,5 m away from the object which has to be illuminated.

Technical specifications

Connecting terminals 3 x 2,5 mm² for double assignment

Casing/colour

Upper part Polycarbonate / white

Lower part Polycarbonate / white

Type of assembly Ceiling mounting

Dimensions (W x H x D) 125 x 37 x 125 mm

Protection class IP40

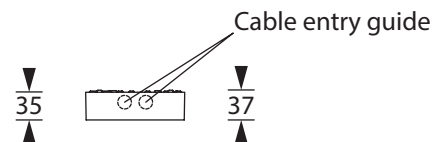
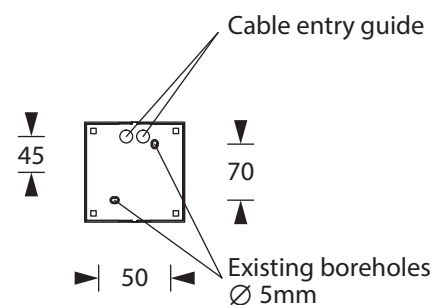
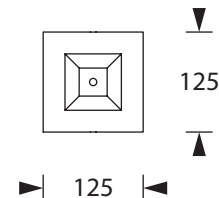
Safety class I

	■ Luminaires for central battery systems	■ Self contained luminaires
Illuminant	3W LED	3W LED
Light current	240lm	50lm (net)
Rated operating time 1h/3h	-	240lm (emergency)
Luminous flux		
Emergency (DC)/mains 1h/3h	-	100%/-
Power consumption	6VA	5VA
Battery current input	15mA	-
Voltage supply	230V 50/60Hz / 220V DC +25/-20%	230V 50/60Hz
NiMh-Akku 1h/3h	-	4,8V 2,0Ah
Temperature range	-10°C to +40°C	-
non-maintained mode	-	-0°C to +35°C
maintained mode	-	-5°C to +30°C
optional:		
Multi-switch and monitoring module	ELC, MSÜ3, SET009, SET010	-
Self monitoring	-	SELF CHECK
Central monitoring	-	SAFELOG Line SAFELOG Wireless

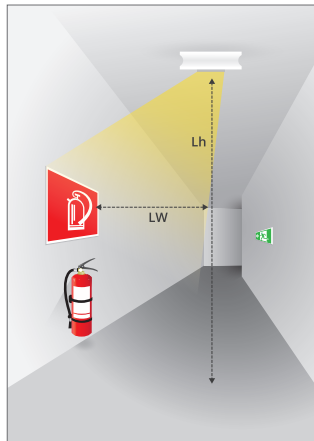
Accessories

Wire guard

Cable assembly set (not for self contained luminaire)

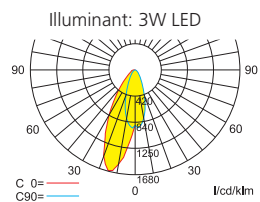


Lighting datas and graphics of luminaire distances (E = 5 lx)



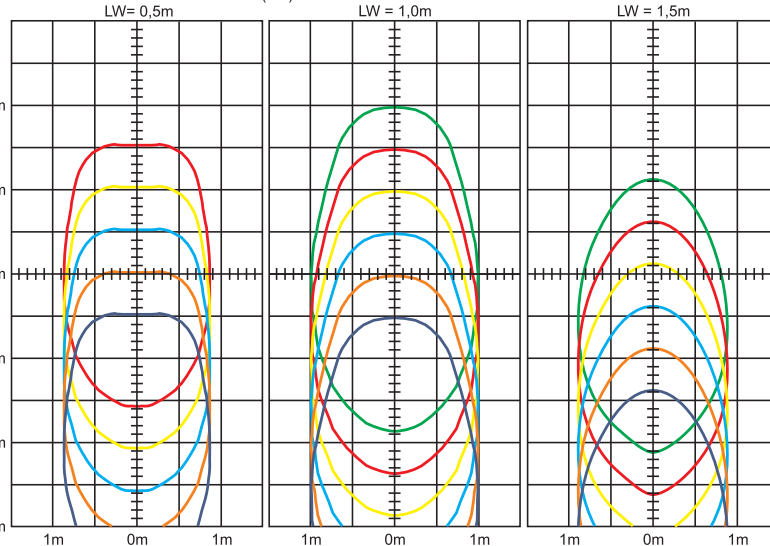
Ceiling mounting

Luminaires for central battery systems



Luminous flux emergency (DC)/mains: 240lm / 240lm

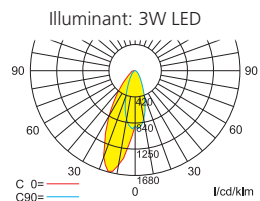
distance between luminaire and wall (LW)



minimum illuminated area with 5lx at luminaire height (Lh)

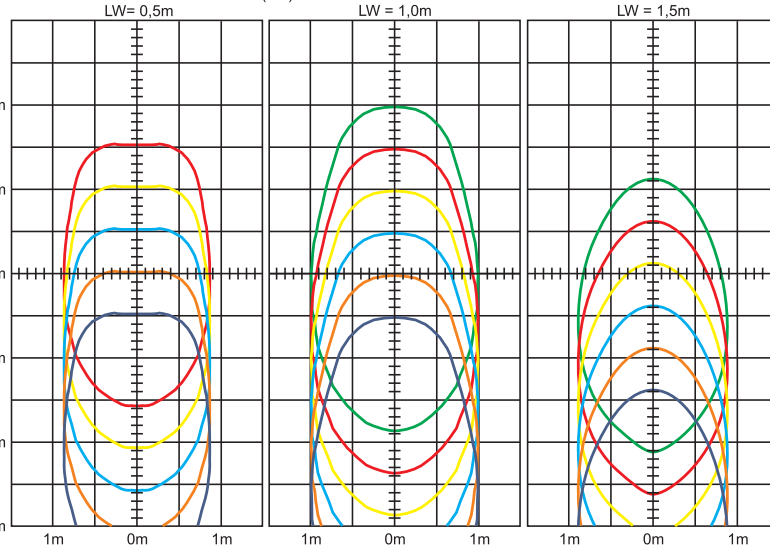
Lh=5,0m Lh=4,5m Lh=4,0m Lh=3,5m Lh=3,0m Lh=2,5m

Self contained luminaires



Luminous flux emergency/mains: 240lm/50lm – Rated operating time: 1h/3h

distance between luminaire and wall (LW)



minimum illuminated area with 5lx at luminaire height (Lh)

Lh=5,0m Lh=4,5m Lh=4,0m Lh=3,5m Lh=3,0m Lh=2,5m