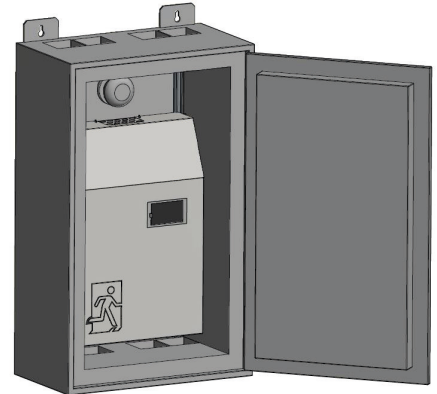




# E30 Cabinet for LPS SAFEBOX 230-200

Fire protection housing to ensure safety-relevant system functioning given an external incidence of fire. Fire-resistant for over 30 minutes - fire-retarding. Fire chamber test at an official material test institute, flame impingement as per standard temperature curve in acc. with DIN EN 1363-1 Test in acc. with DIN EN 1363-1 Test result without limitation regarding cable types or manufacturers, Test certificate No. 20171075/02

Single-door housing for wall mounting. By default, the cabinets have a rear ventilation system, cable entries top and bottom and a changeable door hinge from DIN R to DIN L. Approx. 180° opening angle, rotary bolt with square insert, all-round fire protection seal, automatically foaming in case of fire.

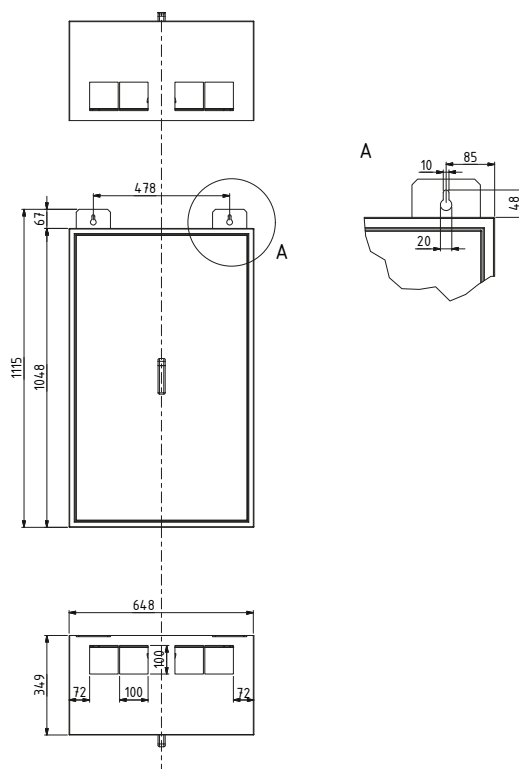


<b>Technical data:</b>	• Connected load for fan	1/N/PE AC 50Hz 230V
	• Weight not including batteries	107 kg
	• Safety class	II
	• Protection class	IP42
	• Dimensions (W x H x D)	648 x 1115 x 349 mm
	• Cable entry point	from top and bottom

<b>Housing:</b>	• The housing is of non-combustible material of Class A2 – s1, d0
	• Chemically highly-resistant and moisture-proof CPL standard surface
	• Light-gray default colour – similar to RAL 7035, edges and bevels set-off somewhat darker

<b>Set-up:</b>	• Non-equipped housing of a high mechanical and chemical resistance
	• Fitted with integrated ventilating system of fan and smoke detector, pre-wired (230 V,AC)
	• Cold smoke sealing system by way of smoke detector
	• Stainless steel door hinges
	• Door can be unhinged to reduce weight in handling and mounting work
	• Door closing in the body, approx. 180° opening angle
	• 2-point door lock via swing lever with two-way key bit (exchangeable for a master-key locking system)
	• All-round fire protection seal, automatically foaming in the event of a fire
	• Cable entry point top + bottom, for bundle entry
	• Fastening rails for mounting the LPS equipment rack
	• LPS equipment rack for easy, non-drill mounting of the LPS device

## Dimensions of the E30 cabinet



## Mounting the LPS device in the cabinet

