



BEAM ACW

Flat aluminium die-cast casing in an appealing design.

Easy to handle locking mechanism without screws.

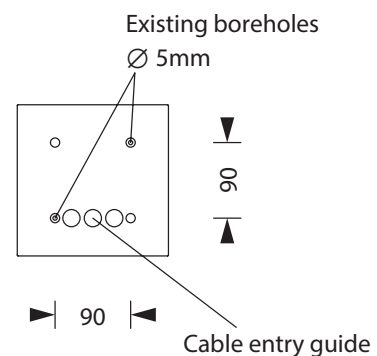
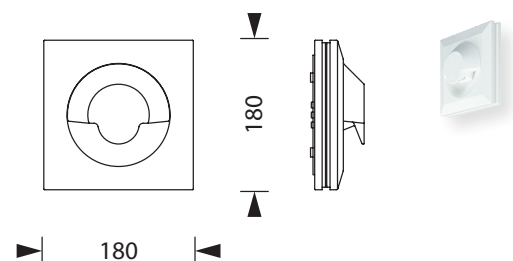
Model for wall mounting with acrylic optics for illumination of escape routes by narrow-beam and wide beam steering characteristics.

Technical specifications

Connecting terminals	3 x 2,5 mm ² for double assignment
Casing/colour	Aluminum die-cast / white other colours available on request
Type of assembly	Wall mounting
Dimensions (WxHxD)	180 x 180 x 65 mm
Protection class	IP40
Safety class	I

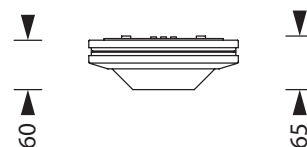


	■ Luminaires for central battery systems	■ Self contained luminaires
Illuminant	3W LED	3W LED
Light current	240lm	50lm (net)
Rated operating time 1h/3h	-	240lm (emergency)
Rated operating time 8h	-	110lm (emergency)
Luminous flux		
Emergency (DC)/mains 1h/3h	-	100% / 20%
Emergency (DC)/mains 8h	-	50% / 20%
Power consumption	6VA	5VA
Battery current input	15mA	-
Voltage supply	230V 50/60Hz / 220V DC +25/-20%	230V 50/60Hz
NiMh-Akku 1h/3h/8h	-	4,8V 2,0Ah
Temperature range	-10°C to +40°C	-
non-maintained mode	-	-0°C to +35°C
maintained mode	-	-5°C to +30°C
optional:		
Multi-switch and monitoring module	ELC, MSÜ3, SET009, SET010, DALI	-
Self monitoring	-	SELF CHECK
Central monitoring	-	SAFELOG Line SAFELOG Wireless

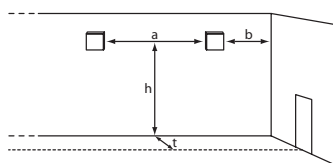


Accessories

Back box



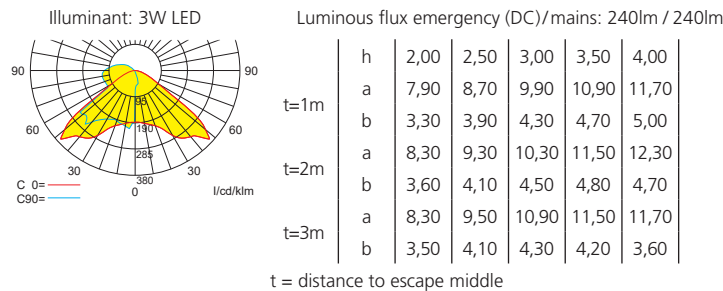
Lighting datas and tables of luminaire distances (E = 1,25 lx)



Wall mounting

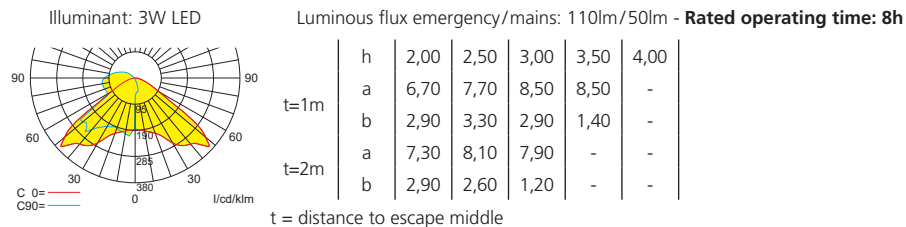
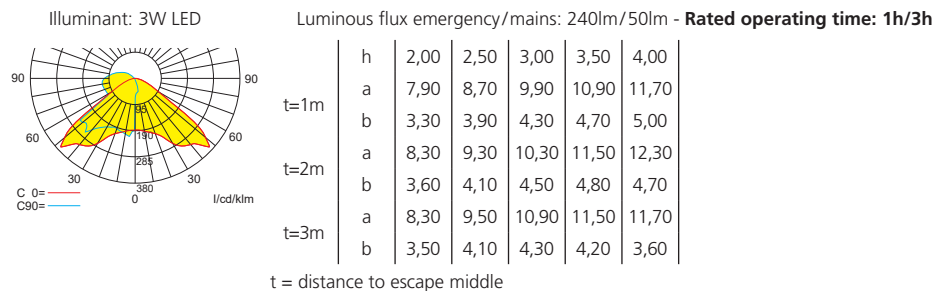
■ Luminaires for central battery systems wide area optic

Distance table for plane emergency routes / distance data in meters



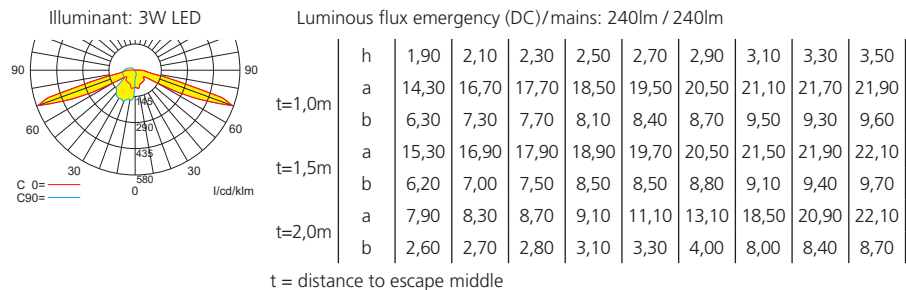
■ Self contained luminaires wide area optic

Distance table for plane emergency routes / distance data in meters



■ Luminaires for central battery systems escape route optic

Distance table for plane emergency routes / distance data in meters



■ Self contained luminaires escape route optic

Distance table for plane emergency routes / distance data in meters

